

Inside Beads



Prumihimo Guide

Copyright © 2021 Riverside Beads



How to Braid with a Prumihimo disk.

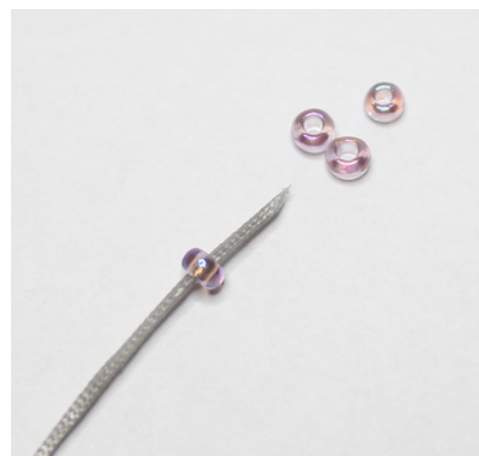
1. Cut 2 100cm lengths of satin cords and 2 110cm lengths of s-lon cord. Place together and tie in the centre to secure.

Place the knot in the centre of your disk and position the satin cord at the top and bottom slots of number 1 & 2. Place the s-lon cord at the top and bottom slots of number 3 & 4.



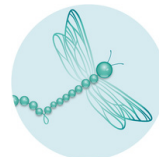
2. Check the cord lengths below the disk are equal, reposition if necessary.

Prepare the s-lon cord by coating the ends with nail varnish incase you want to add beads. ensuring you cover all round the cord. Once this is dry this will enable you to thread the beads with ease. See our range of Beaded Prumihimo and Kumihimo Kits to further your braiding skills.



3. Hold the disk so number 1 is at the top, take the cord from the top slot (1) to the empty slot at the bottom. (Top down)





How to Braid with a Prumihimo disk.

4. Take the cord from the bottom slot with the dot to the empty top slot. (Bottom Up)



5. Move the cord from the unmarked bottom slot over to the slot with a dot. (Bottom Across)



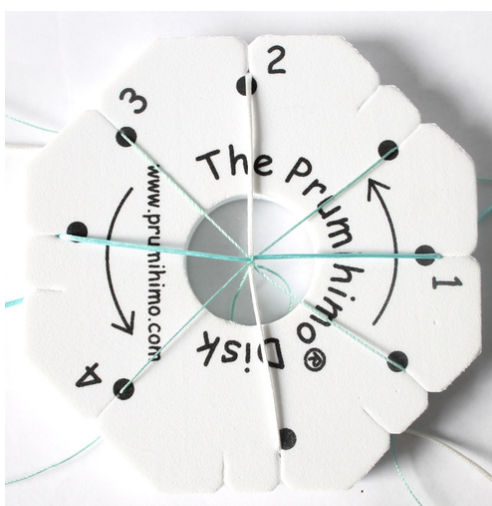
6. Rotate the disk round so the number 2 is at the top and repeat the braiding process, following the process below.

Top down, bottom up, bottom across.

Repeat until the braid is the desired length or learn to add beads with one of our prumihimo kits such as our magatama bracelet or Pip necklace kits.

The Prumihimo disk is the wonderful creation by Pru McRae.

Prumihimo disks and Pru's book *The Prumihimo Disk*, A fresh approach to Kumihimo is available from Riverside Beads for more braiding tips and techniques.





CONTACT US

www.riversidebeads.co.uk

info@riversidebeads.co.uk

83 High Street
Market Deeping
Peterborough
PE6 8ED



@RiversideBeads